

POTAIN
by **Manitowoc**

Igo M 14
The Best in Class



ADVANTAGES OF POTAIN ...

- 1** **ADJUSTABLE BRAKED AXLE, +/- 20°**
Adjustable drawbar with 3 positions or fifth wheel
 - 2** **MULTIPLE CHASSIS LEG POSITIONS**
Angle of departure greater than 20°
Optimum ground clearance, more than 400 mm
Site exit in both directions
 - 3** **HYDRAULIC LEVELLING**
Cylinder rod protected from site damage
Fast, precise locking with screws and nuts
 - 4** **2 SLEWING RADII**
Nominal radius 2.5 m, extra short radius 2 m
 - 5** **PERMANENT STEEL BALLAST, 2 x 2450 kg**
Complete for all configurations in and out of service
Easy to disassemble if needed
 - 6** **EMBEDDED GENERATOR SET**
Diesel and soundproof
Accessible at all times (easy to fill fuel tank) and can be detached
 - 7** **TOTAL SAFETY**
Electronic and electromechanic safety devices
Load safety device ensured by dynamometric ring
- EXCLUSIVE** **REMOTE CONTROLS**
Adjustable axle, hydraulic levelling, generator set

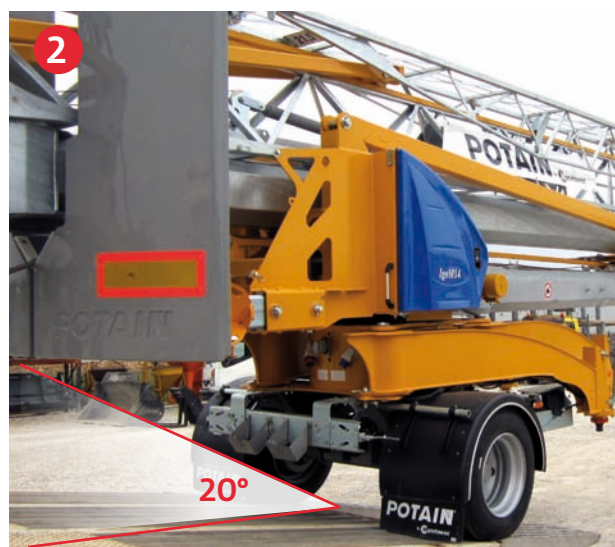
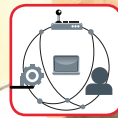


Hook height on horizontal
2 raised jib positions allow
Max. load: **1800 kg**
Tip load: **600 kg at 22 m**



25
km/h*

80
km/h*



tal jib: 19 m
owing a hook height of greater than 25 m

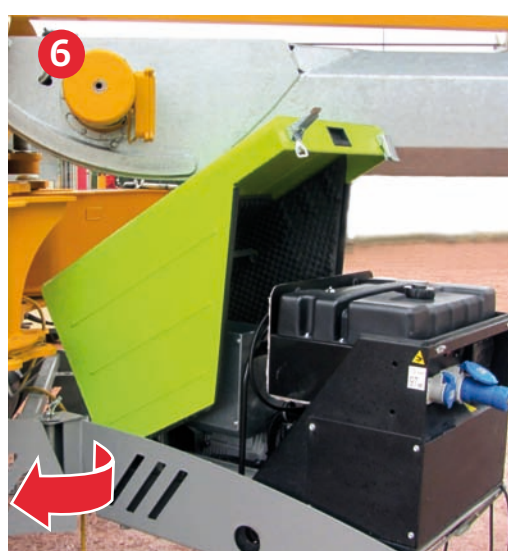
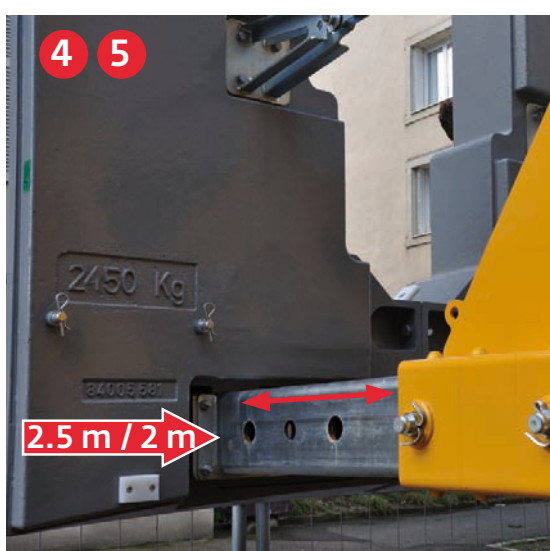
Erection in
20 min

Erection up to
50 km/h wind speed

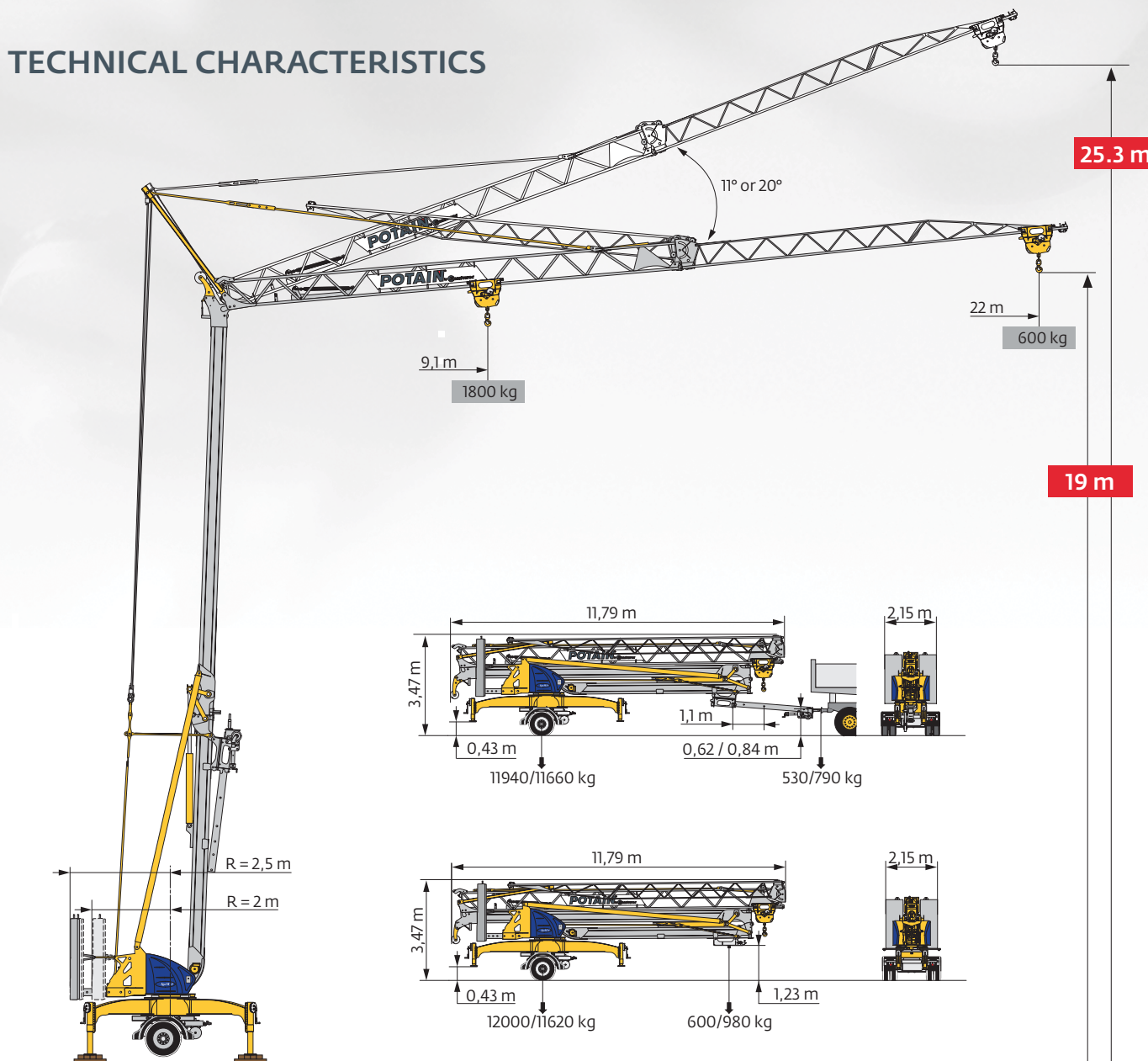


Joints fitted with greasing points
Easier maintenance, longer service life

** according to local road transport approval*



TECHNICAL CHARACTERISTICS



EN 14439 C50-D50
EN 14439 C25-D25
FEM 1.001-A3

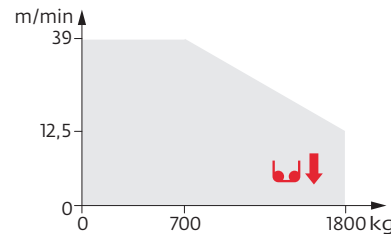
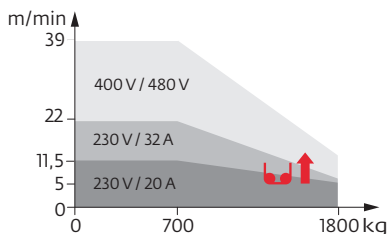
EXCLUSIVE

HOISTING WINCH LVF OPTIMA

230 V
20 A

230 V
32 A

400 V
480 V



Your contact:



Dardilly, France
Phone: +33 (0)4 72 18 20 20
Fax: +33 (0)4 72 18 20 00

➔ Watch the video
Igo M 14



© Manitowoc
Ref: 2014 19 - EN
www.manitowoccranes.com

This document does not have any contractual value